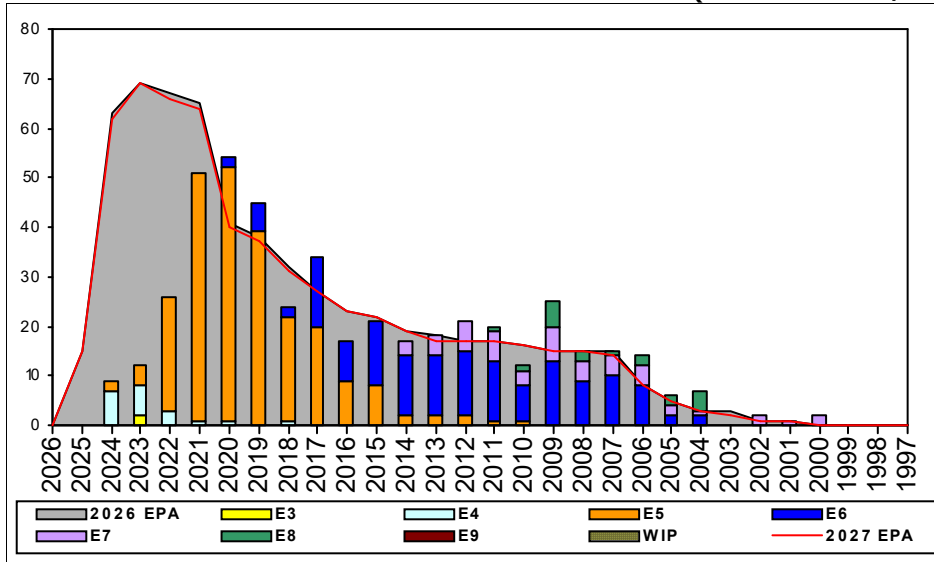


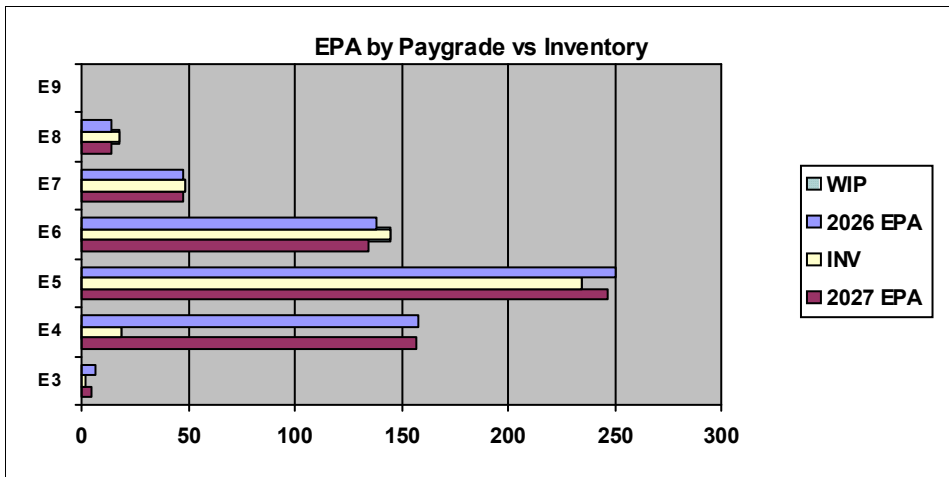
# CTI (Middle East/North Africa) - B511



Sea Shore Flow		
TOUR	SEA	SHORE
1ST		
2ND		
3RD		
4TH		
5TH		
6TH		
7TH		

FORCE STRUCTURE MANNING TO BA										
PG	SEA	INV	BA	SHORE	INV	BA	SEA + SHORE	TOTAL INV	TOTAL BA	
E1-3				66.7%	2	3		2	3	
E4	0.0%		13	13.8%	19	138	12.6%	19	151	
E5	127.3%	28	22	84.5%	174	206	88.6%	202	228	
E6	142.1%	27	19	105.8%	110	104	111.4%	137	123	
E7	175.0%	14	8	92.1%	35	38	106.5%	49	46	
E8	133.3%	4	3	108.3%	13	12	113.3%	17	15	
E9										
<b>Total</b>	<b>112.3%</b>	<b>73</b>	<b>65</b>	<b>70.5%</b>	<b>353</b>	<b>501</b>	<b>75.3%</b>	<b>426</b>	<b>566</b>	

TIS to PG Years	Pay Grade	E1-E3	E4	E5	E6	E7	E8	E9
TIG to PG Years	CTI	TIS	2.2	4.0	8.7	13.8	17.8	21.7
	ALL Navy	TIS	2.3	4.0	8.2	13.1	17.1	
	CTI	TIG	1.3	1.8	4.6	5.7	5.0	4.6
	CTI	TIG	1.7	2.0	5.0	6.5	5.3	



Zone Info	ZONE A	ZONE B	ZONE C	ZONE D	ZONE E	ALL ZONES
FY26 Manning:	48.0%	91.0%	91.0%	116.0%	110.0%	76.0%
FYTD RENL Rate:	57.1%	52.5%	55.6%	95.0%	7.7%	53.7%

## NOTES

ARABIC \*\*\*ZONE A SRB available!\*\*\* Please take advantage.  
- Overall ARB Manning is 91% (INV/BA).

PERSIAN \*\*\*ZONE A/B/C SRB available!\*\*\* Please take advantage.  
- Overall PES Manning is 69% (INV/BA).

Billets are NOW coded for INT/ADV NECs, recommend updating your MNA searches and reaching out to the detailers for further information.

Rating conversions will be considered on a case-by-case basis.

The TECHAD is available at 901-874-2653 for questions.

	E1-3	E4	E5	E6	E7	E8	E9	TOTAL
% INV to FY26 EPA	29%	12%	94%	105%	102%	129%		76%
EPA (FY26)	7	158	250	138	48	14		615
INVENTORY	2	19	235	145	49	18		468
EPA (FY27)	5	157	247	135	48	14		606
% INV to FY27 EPA	40%	12%	95%	107%	102%	129%		77%
INV +WIP / FY26 EPA								
INVENTORY			← E-3 and Below WIP					
INV +WIP / FY26 EPA								